



SBHAC Annual Report

2016-2017



**Spina Bifida
and Hydrocephalus
Association of Canada**

**Association
de spina-bifida et
d'hydrocéphalie du Canada**

472-167 av. Lombard Avenue Winnipeg, MB R3B 0T6 www.sbhac.ca

Charitable Registration # 107999328RR0001

“The Mission of SBHAC

is to improve the quality of life of people

living

with spina bifida and/or hydrocephalus and

their

families through awareness, education,

advocacy and

research, and to reduce neural tube defects.”



Message from the President

The Spina Bifida & Hydrocephalus Association of Canada (SBHAC) has celebrated its 36th year as the voice of Canadians living with spina bifida and/or hydrocephalus. Our organization is taking a long hard look at the past and is determined to use our history to shape our future together.

Each year brings a variety of challenges to meet financial goals while moving our association forward. Our deepest appreciation goes out to the staff and union members of Unifor who rally together to raise funds through golf tournaments and corporate giving.

Nestlé Materna is a key sponsor of June Awareness and the Hope Classic Run Walk Wheel event. They also provide funding for the printing and distribution of our Folic Acid literature which is available in English, French, Chinese, and Punjabi.

SBHAC is committed to support research projects that focus on improving the life of individuals with spina bifida and hydrocephalus. Our Research Committee is chaired by Dr. Marc Del Bigio. SBHAC was pleased to provide funding to Dr. Nathalie Auger for her project entitled Maternal Early Life Risk Factors for Neural Tube Defects in Quebec.

SBHAC encourages inclusivity and independence for all children, teens and adults living with sb&h. SBHAC's Education Committee, chaired by Sarah Williams, chose 2 students to receive bursaries for post secondary education. SBHAC is also proud to be a partner with the Alliance for an Inclusive and Accessible Canada.

Our goal and mission to improve the quality of life of people living with spina bifida and/or hydrocephalus and their families requires ongoing team work and building of strong relationships based on transparency and a shared commitment. We need to remain steadfast in our view that research, advocacy and awareness are important strategies in reducing the incidence and impact that spina bifida and hydrocephalus has on our lives and in the lives of those we love.

I wish to thank our supporters, partners, funders, staff and volunteers across Canada who continue to contribute to the growth of SBHAC and play a big part in securing a future for all individuals living with spina bifida and hydrocephalus.

Together - we can make it happen!

Susana Scott

President

2016-2017 National Bursary Winners

Morgan Cathcart : Bachelor of Arts, Elementary Education Transfer Program, MacEwan University

Matthew Veeneman : Business Administration Program, Northern Alberta Institute of Technology

2016-2017 National Research Award Winner

Dr. Nathalie Auger of Centre hospitalier de l'Universite de Montreal,
for her research entitled Maternal Early Life Risk Factors for Neural Tube Defects in Quebec

Member Associations

Spina Bifida & Hydrocephalus Association of British Columbia
Spina Bifida & Hydrocephalus Association of Southern Alberta
Spina Bifida & Hydrocephalus Association of Northern Alberta
Spina Bifida & Hydrocephalus Association of Southern Saskatchewan
Spina Bifida & Hydrocephalus Association of Saskatchewan North
Spina Bifida & Hydrocephalus Association of Manitoba
Spina Bifida & Hydrocephalus Association of Prince Edward Island
Spina Bifida & Hydrocephalus Association of Nova Scotia

2016-2017 Board of Directors

| | |
|---------------------------------|----------------------------|
| Susana Scott – President | Judi Haddy – Director |
| Vacant – Treasurer | Terence Hesom – Director |
| Sarah Williams – Secretary | Minh Ho – Director |
| Colleen Talbot - Past President | Jacque Jewell – Director |
| Linda Randall - Vice President | Andrea MacBride – Director |
| Dr. William Arnold - Director | Joey Pothe – Director |
| Brent Buss – Director | Mandi Rami - Director |
| Dr. Marc Del Bigio - Director | Ken Stickle – Director |
| Lorelei Fletcher – Director | |

2016-2017 Research Advisory Panel

| | |
|--------------------|----------------------|
| Dr. Paige Church | Dr. Douglas Cochrane |
| Dr. M. Del Bigio | Ms. Viola Duff |
| Ms. Beverly Irwin | Ms. Katherine Moore |
| Dr. Keith Chambers | Dr. James Drake |

Our Supporters

Since 1985 union members have contributed over \$1,600,000 to SBHAC through golf tournaments, draws, matching gifts, special events and per capita funding. Our thanks to the brothers and sisters of Unifor for their ongoing support.

Unifor & Local Unions

Unifor Union
Unifor Local 1-S
Unifor Local 79M

Unifor – Ontario Region
Unifor Local 6
Unifor Local 681

Unifor Canada Council
Unifor Local 27C
Unifor Local 723M

Corporations

Acco Brands Canada Inc.
Belgian Club/Legion # 7
Breckles Insurance
Canadian National Railway
Cavan Advertising
CRH Canada Group Inc.
Communications Technologies Credit Union
DHL Express
Enwave Energy Corp.
Goldblatt Partners
Green Shield Canada
Hood Packaging Corp.
Kelly Ukrainec Chartered Accountants
Loomis Express
Nestle Canada
Personal Attendant Care Inc.
Progressive Waste Solutions Canada
Richard Naherny
Sanofi Pasteur
South Beach Casino & Resort
Union Gas Ltd.
Waste Management
Western Oil & Gas Ltd
Wyatt Dowling Insurance

American Income Life
Bell Canada
Brematson & Associates
Canadian Pacific Railway
Certain Teed Gypsum Canada
Costco Wholesale Canada Inc.
Diamond Athletic Supplies
Expertech
Great Canadian Coaches
H.C. Starck Canada Inc.
ICS Courier
Jeanne's Bakery
Morden's of Winnipeg Chocolate
Old Dutch Foods
PlainsMidstream Canada ULC
RBC
Richlu Manufacturing
Saracens RFC
The Keg
Universal Promotions
Wawanesa
Winnipeg Blue Bombers
Zealous Medi Spa

BDO Canada LLP
Bijou Fine Jewelry
Caley Wray
Carte International Inc.
City of Winkler
Cytec Canada
Credit Union Central of MB
Domtar Inc
Freeman Audio Visuals
Great Lakes Technical Training
Holiday Inn Winnipeg South
Investors Group
Koskie Minsky
Parkside Home Building Centre
Prairie Sky Promotions
Revlon
Roxul Inc.
Sony Centre
Tucknuck Holdings Inc.
Wakefield Canada Inc.
Western Diamond & Gold Exchange
Winnipeg Jets
2503440 Ontario Inc.

Foundations

Winnipeg Foundation
United Way
All Charities Campaign - Employees of Government of Manitoba
Davidson & District Donor's Choice
CN Employees' & Pensioners' Community Fund
The Benevity Community Impact Fund

Memorial Donations

A memorial gift is a personal remembrance that honours the life of a loved one or friend. Your gift will support many programs and services provided by SBHAC. An acknowledgement of your donation is sent to the family but the amount is not disclosed. All donors are sent an official tax receipt. Memorial donations may be made direct to SBHAC and memorial cards and envelopes are provided to funeral homes.

In Memory of:

Terry Lee Adams

Faye Cherry

Joan Clark

Holly Dizon

Abigail Harms

Janek Honczarek

Sandra Manz

Harlinda Meidl

Scott Murray

Dorothy Sullivan

In Honour Donations

Donations made to SBHAC to commemorate a special person or event. "In Lieu of Party Favors and/or gifts" cards are provided by SBHAC. An official tax receipt is supplied to the donors.

In Honour of:

Keegan Benner

Evan Hesom

Bequests

A Legacy of Support is made by making a bequest through your will to SBHAC. This gift provides lasting benefits through support, research, awareness and education programs. Special thanks to :

Edith Crowston

Spina Bifida and Hydrocephalus Association of Canada
Statement of Operations

Year ended April 30

2017

2016

| | General Fund | Research Fund | Scholarship Fund | Total | Total (Note 10) |
|---|-----------------|--------------------|---------------------|--------------------|--------------------|
| Revenues | | | | | |
| Unifor Canada | \$ 50,298 | \$ - | \$ - | \$ 50,298 | \$ 54,760 |
| Corporate and foundation | 23,476 | - | - | 23,476 | 26,007 |
| Sale of materials | 1,715 | - | - | 1,715 | 1,133 |
| Individuals | 15,590 | - | - | 15,590 | 38,720 |
| Member contributions | 6,300 | 1,250 | 750 | 8,300 | 11,240 |
| Interest | 46 | 1,260 | 116 | 1,422 | 4,635 |
| Memberships | 2,250 | - | - | 2,250 | 2,500 |
| Rent | 2,400 | - | - | 2,400 | 2,400 |
| Fundraising | 47,427 | - | - | 47,427 | 40,481 |
| | <u>149,502</u> | <u>2,510</u> | <u>866</u> | <u>152,878</u> | <u>181,876</u> |
| Expenses | | | | | |
| Administration | 23,748 | - | - | 23,748 | 42,500 |
| Agency development | 85,381 | - | - | 85,381 | 63,195 |
| Amortization | 666 | - | - | 666 | 883 |
| Dues and subscriptions | 150 | - | - | 150 | 350 |
| Insurance | 3,533 | - | - | 3,533 | 3,112 |
| Interest and bank charges | 1,066 | - | - | 1,066 | 1,358 |
| Meetings and conferences | 171 | - | - | 171 | 633 |
| Professional fees | 5,862 | - | - | 5,862 | 5,283 |
| Program and services | 15,751 | - | - | 15,751 | 14,223 |
| Rent | 6,221 | - | - | 6,221 | 11,051 |
| Research grants | - | 24,740 | - | 24,740 | - |
| Scholarship | - | - | 2,000 | 2,000 | 2,000 |
| Telephone and internet | 3,911 | - | - | 3,911 | 4,363 |
| | <u>146,460</u> | <u>24,740</u> | <u>2,000</u> | <u>173,200</u> | <u>148,951</u> |
| (Deficiency) excess of revenues over expenses | <u>\$ 3,042</u> | <u>\$ (22,230)</u> | <u>\$ (1,134)</u> | <u>\$ (20,322)</u> | <u>\$ 32,925</u> |

Spina Bifida and Hydrocephalus Association of Canada
Statement of Changes in Fund Balances

Year ended April 30

2017

2016

| | <u>General Fund</u> | <u>Research Fund</u> | <u>Scholarship Fund</u> | <u>Total</u> | <u>Total</u> |
|---|-------------------------|--------------------------|-----------------------------|--------------------------|-------------------|
| Fund balances, beginning of year | \$ 21,885 | \$ 338,358 | \$ 14,271 | \$ 374,514 | \$ 341,589 |
| (Deficiency) excess of revenues over expenses | <u>3,042</u> | <u>(22,230)</u> | <u>(1,134)</u> | <u>(20,322)</u> | <u>32,925</u> |
| Fund balances, end of year | <u>\$ 24,927</u> | <u>\$ 316,128</u> | <u>\$ 13,137</u> | <u>\$ 354,192</u> | <u>\$ 374,514</u> |

Spina Bifida and Hydrocephalus Association of Canada
Statement of Financial Position

April 30

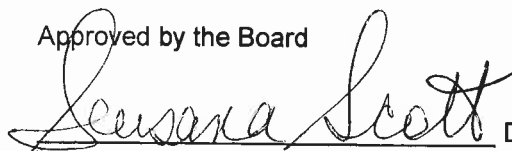
2017

2016

| | General Fund | Research Fund | Scholarship Fund | Total | Total |
|---|------------------|-------------------|---------------------|-------------------|-------------------|
| Assets | | | | | |
| Current | | | | | |
| Cash and equivalents (Note 3) | \$ 14,067 | \$ 316,128 | \$ 13,137 | \$ 343,332 | \$ 367,492 |
| Receivables | 11,818 | - | - | 11,818 | 31,900 |
| Prepays | 3,049 | - | - | 3,049 | 7,611 |
| Inventory | 8,749 | - | - | 8,749 | 6,001 |
| | <u>37,683</u> | <u>316,128</u> | <u>13,137</u> | <u>366,948</u> | <u>413,004</u> |
| Property and equipment (Note 4) | 2,194 | - | - | 2,194 | 2,860 |
| | <u>\$ 39,877</u> | <u>\$ 316,128</u> | <u>\$ 13,137</u> | <u>\$ 369,142</u> | <u>\$ 415,864</u> |
| Liabilities | | | | | |
| Current | | | | | |
| Payables and accruals | \$ 12,509 | \$ - | \$ - | \$ 12,509 | \$ 16,473 |
| Deferred contributions for capital assets (Note 5) | 2,191 | - | - | 2,191 | 2,818 |
| Deferred contributions (Note 6) | 250 | - | - | 250 | 22,059 |
| | <u>14,950</u> | <u>-</u> | <u>-</u> | <u>14,950</u> | <u>41,350</u> |
| Fund Balances | | | | | |
| Restricted | - | 316,128 | 13,137 | 329,265 | 352,629 |
| Unrestricted | 24,927 | - | - | 24,927 | 21,885 |
| | <u>24,927</u> | <u>316,128</u> | <u>13,137</u> | <u>354,192</u> | <u>374,514</u> |
| | <u>\$ 39,877</u> | <u>\$ 316,128</u> | <u>\$ 13,137</u> | <u>\$ 369,142</u> | <u>\$ 415,864</u> |

Commitment (Note 7)

Approved by the Board

 Director

Director

Spina Bifida and Hydrocephalus Association of Canada
Statement of Cash Flows

Year ended April 30

2017

2016

Cash derived from (applied to):

Operating

| | | |
|---|--------------|--------------|
| (Deficiency) excess of revenues over expenses | \$ (20,322) | \$ 32,925 |
| Amortization | 666 | 883 |
| Amortization of deferred contributions for capital assets | <u>(626)</u> | <u>(826)</u> |

(20,282) 32,982

Change in non-cash working capital items

| | | |
|------------------------|-----------------|--------------|
| Receivables | 20,082 | (29,311) |
| Prepays | 4,562 | (2,811) |
| Inventory | (2,748) | 2,704 |
| Payables and accruals | (3,965) | (2,635) |
| Deferred contributions | <u>(21,809)</u> | <u>3,568</u> |

(24,160) 4,497**Investing**

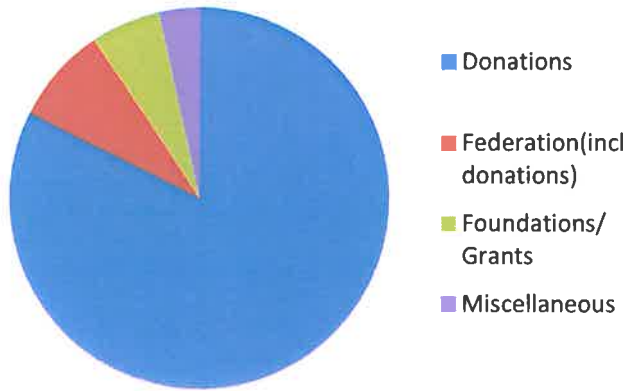
| | | |
|--|----------|--------------|
| Long-term investment matured to cash and equivalents | <u>-</u> | <u>5,385</u> |
|--|----------|--------------|

Net increase in cash**(24,160)** 9,882**Cash and equivalents**

| | | |
|-------------------|----------------|----------------|
| Beginning of year | <u>367,492</u> | <u>357,610</u> |
|-------------------|----------------|----------------|

| | | |
|-------------|-------------------|-------------------|
| End of year | <u>\$ 343,332</u> | <u>\$ 367,492</u> |
|-------------|-------------------|-------------------|

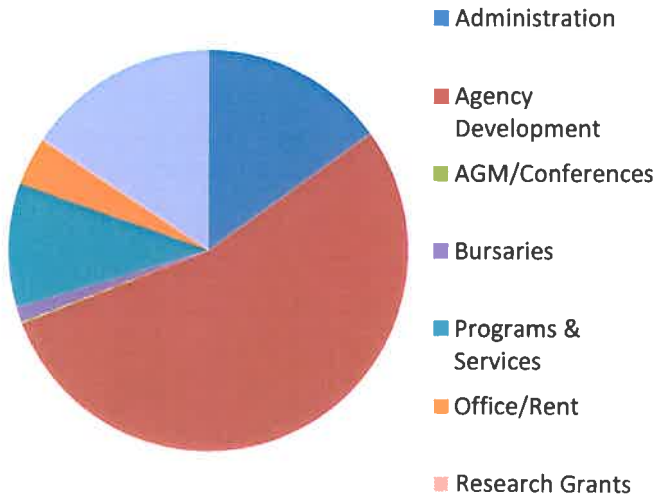
SBHAC Revenue FY 2017



SBHAC Revenue FY 2017

| | |
|-----------------------------|------------|
| Donations | \$ 127,723 |
| Federation (incl donations) | \$ 10,550 |
| Foundation/Grants | \$9,068 |
| Miscellaneous | \$ 5,538 |

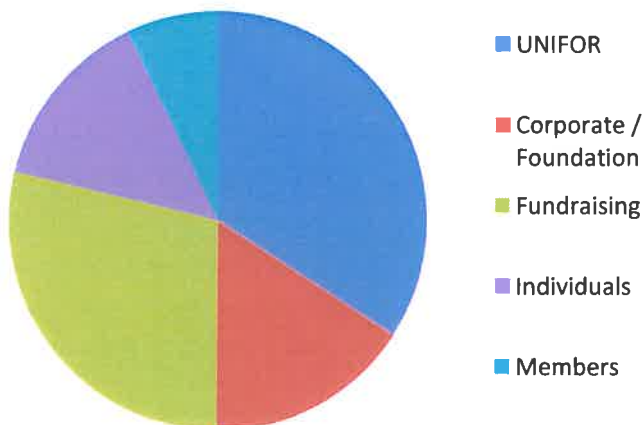
SBHAC Expenses FY 2017



SBHAC Expenses FY 2017

| | |
|-----------------------|----------|
| Administration | \$38,936 |
| Agency Development | \$85,381 |
| AGM/Conferences | \$ 171 |
| Bursaries | \$ 2,000 |
| Research | \$24,740 |
| Programs and services | \$15,751 |
| Office/Rent | \$6,221 |

SBHAC Donations FY 2017



SBHAC Donations FY 2017

| | |
|-----------------------|-----------|
| UNIFOR | \$50,298 |
| Corporate/ Foundation | \$ 23,475 |
| Fundraising | \$ 42,234 |
| Individuals | \$ 20,783 |
| Members | \$ 10,550 |

Thank You